

Waterfalls OF NORTH ALABAMA



Dismals Canyon
Rainbow Falls
Phi Campbell, Ala.

NORTH
ALABAMA

Alabama Mountain Lakes Tourist Association

800.648.5381 • www.NorthAlabama.org

free mobile exclusive waterfalls app on our website

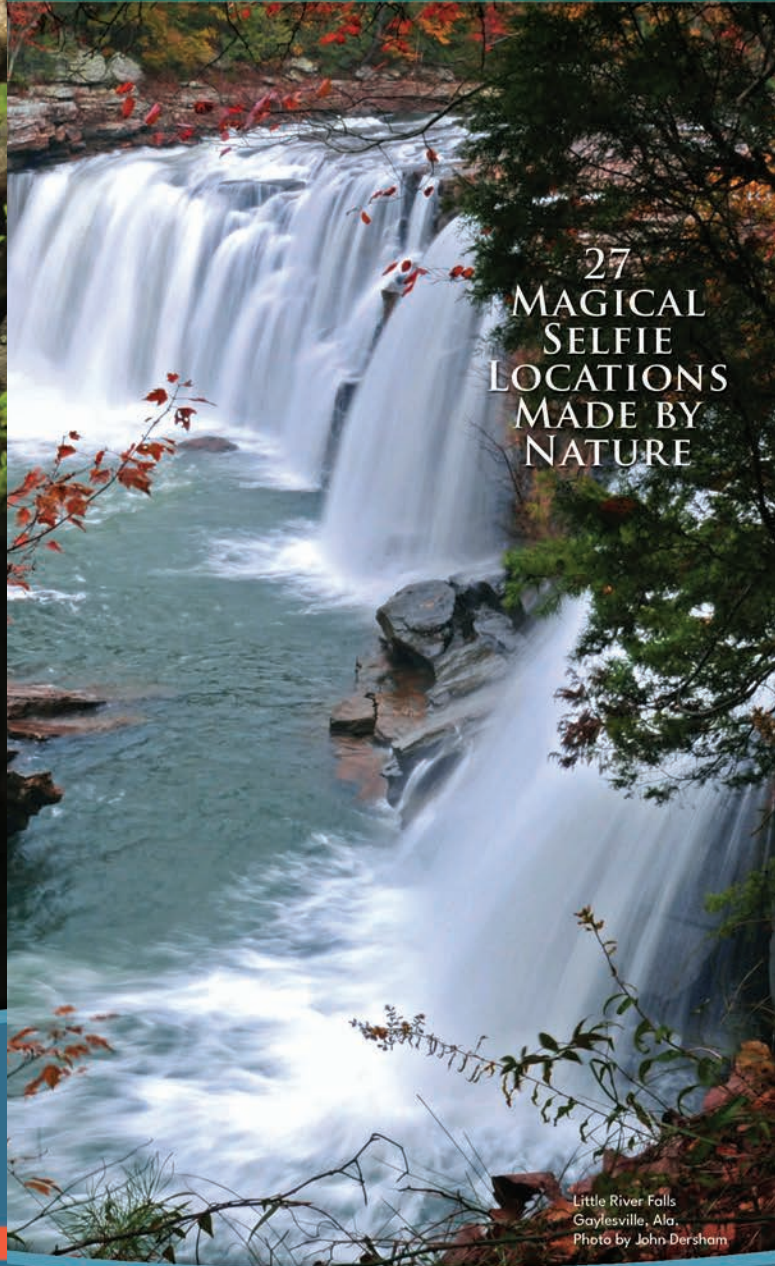


Find us on social at @visitnorthal



3-24/Printed in USA

Waterfalls OF NORTH ALABAMA



27
MAGICAL
SELFIE
LOCATIONS
MADE BY
NATURE

Little River Falls
Gaylesville, Ala.
Photo by John Dersham

www.NorthAlabama.org

About North Alabama

North Alabama marks the southern extremity of the beautiful Appalachian Mountains. The mighty Tennessee River cuts a large valley across our width, creating an abundance of creeks, streams, rivers, mountains, and lakes. Here you will find level highlands from 700 to 800 feet, a narrow strip of gentle rolling lowlands varying in elevation from 500 to 800 feet on each side of the Tennessee River, and a rugged section with steep mountain-sides, deep narrow valleys, and flat mountain-tops from 400 to 1,800 feet.

Preserving and enjoying nature is a rich part of our heritage. Our area includes the Bankhead National Forest, the Sipsey Wilderness Area, Wheeler National Wildlife Refuge, eight expansive lakes, millions of acres of woodlands, and hundreds of miles of nature-based trails.

From magical waterfalls, kayaking and white water rafting, to the world's largest space museum and homes of American legends Helen Keller and Jesse Owens, we invite you to come explore and see what each of the 16 counties of North Alabama have to offer.

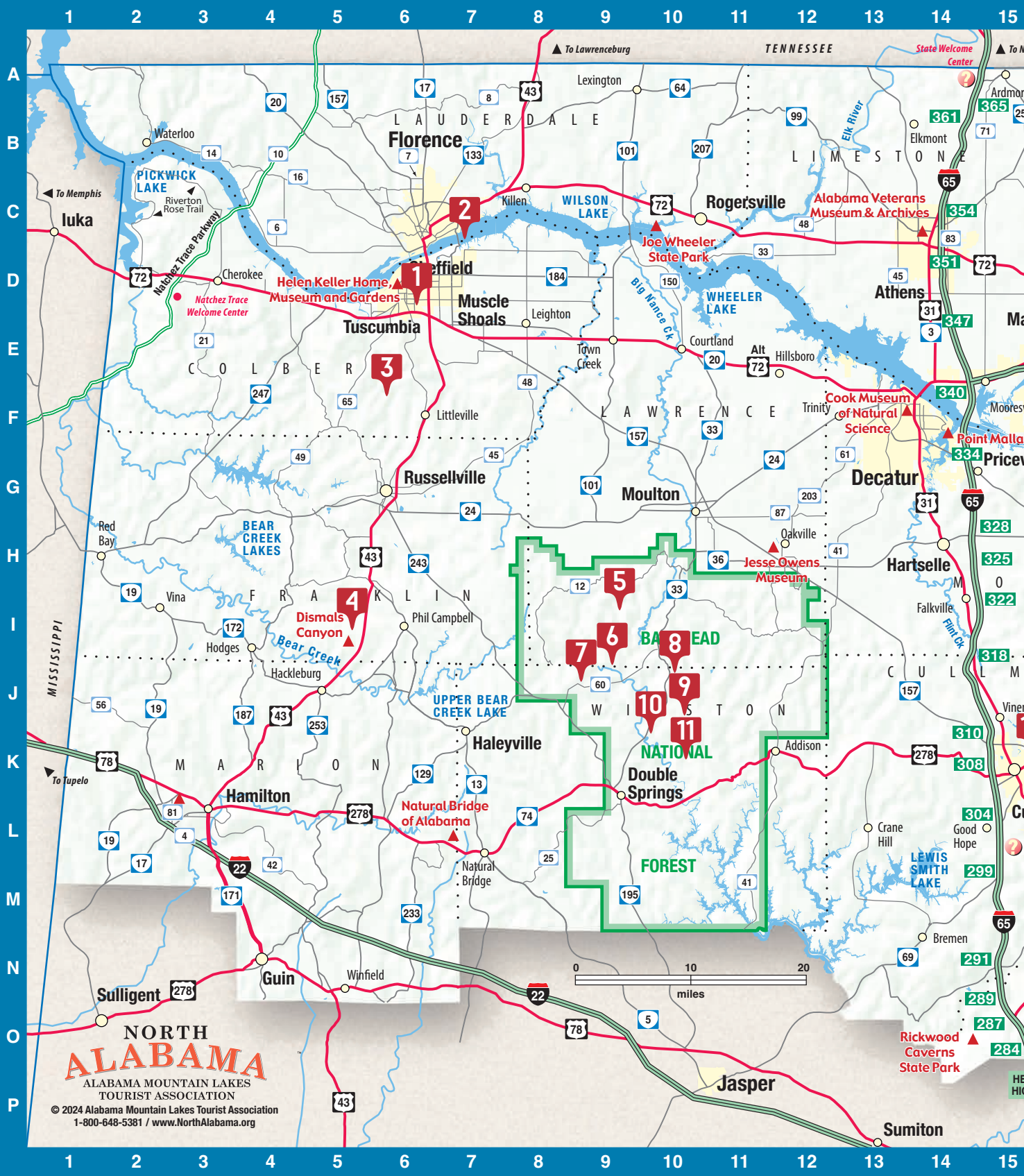
Noccalula Falls Park
Gadsden, Alabama
Photo by John Dersham

- | | | | |
|--|---|---|--|
| 1 Coldwater Falls
Spring Park,
Tuscumbia, Alabama | 8 Shangri-La Falls
Bankhead National Forest | 15 Bethel Spring Falls
Gurley, Alabama | 23 Grace's High Falls
Fort Payne, Alabama |
| 2 Wilson Dam Falls
Muscle Shoals, Alabama | 9 Turkey Foot Falls
Double Springs, Alabama | 16 Alum Hollow Trail
Huntsville, Alabama | 24 Congo Falls
Cherokee County, Alabama |
| 3 Lacefield Falls
Tuscumbia, Alabama | 10 Mize Mill Falls
Bankhead National Forest | 17 Mardis Mill Falls
Blountsville, Alabama | 25 Yellow Creek Falls
Cherokee County, Alabama |
| 4 Rainbow Falls
Dismals Canyon,
Phil Campbell, Alabama | 11 Sougahoagdee Falls
Bankhead National Forest,
Houston, Alabama | 18 Walls of Jericho
Jackson County, Alabama | 26 Griffin Falls
Collinsville, Alabama |
| 5 Kinlock Falls
Bankhead National Forest
near Haleyville, Alabama | 12 Larkwood Falls
Cullman, Alabama | 19 Pisgah Gorge Falls
Pisgah, Alabama | 27 Noccalula Falls
Noccalula Falls Park,
Gadsden, Alabama |
| 6 Parker Falls
Bankhead National Forest | 13 Lost Sink Falls
Keel Mountain Preserve,
Gurley, Alabama | 20 High Falls
Geraldine, Alabama | |
| 7 White Creek Falls
Bankhead National Forest | 14 Dry Falls
Monte Sano Nature
Preserve, Huntsville,
Alabama | 21 DeSoto Falls
Mentone, Alabama | |
| | | 22 Little River Falls
Gaylesville, Alabama | |



Pack it in, pack it out. Please put all litter and pet waste in garbage bags and carry it home, and consider packing out other trash that you find along the way.

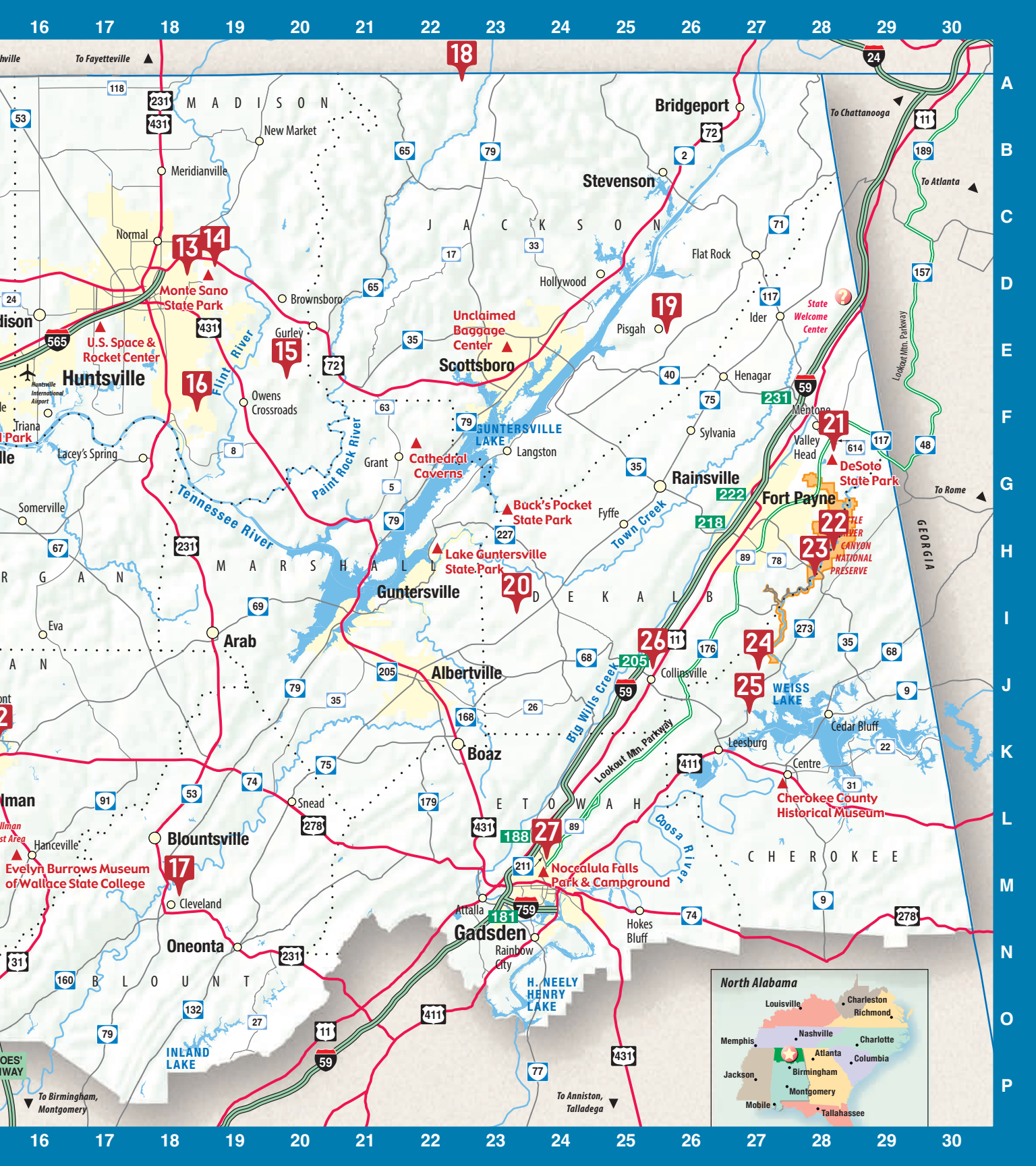
Map markers are for general locations only. Please refer to each waterfall's location for addresses and/or GPS locations. Additional information and photographs of each site may be found on our website www.NorthAlabama.org.



**NORTH
ALABAMA**

ALABAMA MOUNTAIN LAKES
TOURIST ASSOCIATION

© 2024 Alabama Mountain Lakes Tourist Association
1-800-648-5381 / www.NorthAlabama.org





1

COLDWATER FALLS

Spring Park, Tuscumbia, Alabama

GPS: N 34 43.789 W 87 42.205

www.ColbertCountyTourism.org

Coldwater Falls is a man-made waterfall that is constructed with over 2,000 tons of sandstone. It is located at Spring Park in Tuscumbia and stretches 80 feet wide and is 42 feet tall. Each day over 4.3 million gallons of water flow over the falls. Handicapped accessible.



Photo by North Alabama
Ambassador David Parham

2 Wilson Dam Falls

Muscle Shoals, Alabama, GPS: 34.794583 -87.6295229
www.ColbertCountyTourism.org

Wilson Dam is on the Tennessee River near Muscle Shoals. It is the only neoclassical-style dam in the Tennessee Valley Authority system, integrating themes of ancient Roman and Greek architecture into the modern structure. The waterfall is on a high rock wall adjacent to the dam. Small feeder creeks run through the natural area and create this waterfall on an adjacent cliff wall.



Photo by John Dersham

3 Lacefield Falls

Tuscumbia, Alabama, GPS: 34.62313400 -87.79320700
www.landtrustna.org/properties/cane-creek-preserve

Lacefield Falls is located in Cane Creek Canyon Nature Preserve just south of Tuscumbia. A large swath of wild streams, box canyons, waterfalls, rock shelters, and sandstone bluffs encompassing 700 acres remains nearly as pristine and wild as it did centuries ago.



Photo by John Dersham

4 Rainbow Falls

Dismals Canyon, Phil Campbell, Alabama
 GPS: 34.3262135 -87.7841305
www.dismalscanyon.com

Located in northwest Alabama, Rainbow Falls is nestled in a small canyon known as The Dismals, featuring two waterfalls, many various rock formations, and a 3/4-mile trail through the canyon. Dismals Canyon is a National Natural Landmark and is noted as one of the finest examples of ecological and geological features composing our nation's natural history. Pristine wilderness, romantic cabins, secluded campsites, hiking, swimming, canoeing, wildflowers, a country store, and more. Cabins and group tours available year round by reservation.

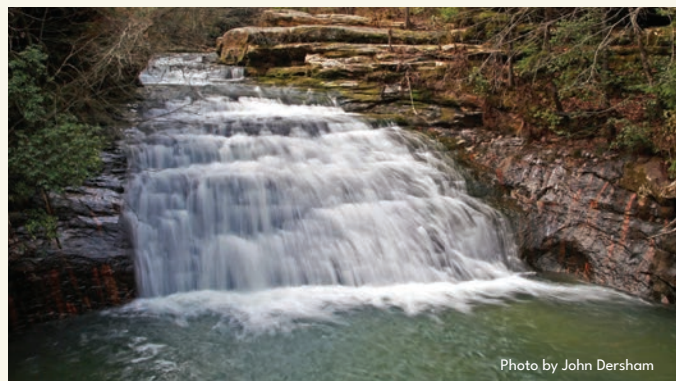


Photo by John Dersham

5 Kinlock Falls

Bankhead National Forest, Haleyville, Alabama
 GPS: 34.3084 -87.5028
www.fs.usda.gov, www.wildal.org/kinlockfalls.html

Located along Hubbard Creek in the Bankhead National Forest, Kinlock Falls is a cascade waterfall that drops 15 feet over a span of 20 feet. Though Kinlock Falls is not a high waterfall, it features a magnificent view, along with being an area that people come to swim.



Photo by North Alabama
Ambassador David Parham

6 Parker Falls

Bankhead National Forest, GPS: N 34°18.174' W 087°29.726'
www.fs.usda.gov

Parker Falls, located in Bankhead National Forest, is a 4-mile round trip moderate hike. There is no official trail to Parker Falls, but typically has a worn path. Along this hike, the trail meanders through a beautiful pine forest and passes several beautiful waterfalls before making it to Parker Falls.



Photo by North Alabama
Ambassador David Parham

7 White Creek Falls

Bankhead National Forest
 GPS Coordinates: 34.313148, -87.467160
www.fs.usda.gov

White Creek Falls is located in Bankhead National Forest and is a difficult 5-mile round trip hike. White Creek Falls has an upper and lower waterfall. The upper waterfall is a shorter waterfall with a unique heart-shaped pool also known as the "Valentines Pool." The lower waterfall is much taller and settles into an impressive canyon.

Explore North Alabama's Majestic Appalachian Mountains



Photo by North Alabama
Ambassador David Parham

8 Shangri-La Falls

Bankhead National Forest
 Waterfall Coordinates: 34.279370, -87.306397
 Parking Coordinates: 34.282917, -87.300278
www.fs.usda.gov

Located deep in Bankhead National Forest is this beautiful waterfall surrounded by luscious green trees, falling into a gorgeous pool of blue water. The hike is 3 miles roundtrip and is moderate for most of the hike. It can be difficult getting into and out of the canyon. This waterfall is seasonal and the best time to visit is in the winter or spring.



Photo by John Dersham

9 Turkey Foot Falls

Double Springs, Alabama, GPS: 34.2848833 -87.428716666
www.fs.usda.gov

Turkey Foot Falls is within a 30-minute walk from the Sipsey River Picnic Grounds and Recreation Area, the main developed access area off of County Road 6 (Cranal Road). Turkey Foot Creek runs through a sandstone canyon then empties into the Sipsey Fork. The area is rich in Native American and pioneer history.



Photo by North Alabama
Ambassador David Parham

10 Mize Mill Falls

Bankhead National Forest
GPS: 34°16'56.2"N 87°24'24.4"W

Mize Mill Falls is located in Bankhead National Forest. This enchanting area is covered in luscious green moss and evergreen trees. There are two ways to get to the falls but no official, marked trail. One is a difficult short hike and the other is a moderate 2-mile round trip hike. Turkey Foot Falls is downstream from Mize Mill Falls and well worth a stop.



Photo by North Alabama
Ambassador David Parham

11 Sougahoagdee Falls

Bankhead National Forest, Houston, Alabama
GPS: 34°14'13.4" N 87°16'45.2" W
www.fs.usda.gov

Located in Bankhead National Forest, this waterfall is a 4-mile round trip moderate hike. There are no official trails to Sougahoagdee, typically there is a worn path. The hike to this waterfall follows striking cliff faces and a beautiful nearby river. Along this hike are several other streams and waterfalls.



Photo by North Alabama
Ambassador David Parham

12 Larkwood Falls

Cullman, Alabama, GPS: 34.1896865 -86.8082058

Larkwood Falls is a beautiful waterfall that runs from Lake Catoma located in the back of a neighborhood in Cullman, AL. This waterfall is seasonal. During North Alabama's wet season, winter and spring, a great view of the waterfall is accessible on Larkwood Drive NE. There is no hiking required to see this waterfall.



Photo by North Alabama
Ambassador David Parham

13 Lost Sink Falls

Keel Mountain Preserve, Gurley, Alabama
GPS: 34.655597 -86.41368
www.nature.org

Lost Sink Falls on Keel Mountain is a 3-mile round trip moderate hike to an incredibly unique waterfall in Gurley, AL. Along the hike, the trail is lined by a beautiful creek and rock formations. Lost Sink Falls is a sinkhole waterfall and disappears into a cave making it a jaw dropping hike.



Photo by North Alabama
Ambassador David Parham

14 Dry Falls

Monte Sano Nature Preserve, Huntsville, Alabama

GPS: 34°43'45.0"N 86°33'20.2"W

www.landtrustnal.org

Dry Falls is located in Huntsville, AL on the Monte Sano Nature Preserve owned by the Land Trust of North Alabama. While there are several ways to arrive at the waterfall, the recommended way is to park at 3 Caves parking lot and follow Waterline Trail. Along this trail is 3 Caves (an old limestone quarry) and a heavily wooded trail. This waterfall is very dependent on recent rain.



Photo by Meleto Homes

15 Bethel Spring Falls

2641 Cherry Tree Road, Gurley, Alabama

GPS: N 34°36'40.64 W 86°21'46.39

www.landtrustnal.org/properties/bethel-spring-preserve

Bethel Spring Nature Preserve on Keel Mountain offers hikers two miles of free trails to explore as well as one of Madison County's largest waterfalls. The waterfall is impressive enough above ground but continues its descent into a cave below, flows downhill underground, and exits through a spring at the base of the mountain.

Explore North Alabama's Majestic Appalachian Mountains



Photo by North Alabama
Ambassador David Parham

16 Alum Hollow Trail

Huntsville, Alabama, GPS: 34.618713 -86.516257

www.landtrustnal.org/properties/green-mountain-preserve/

This 30-foot tiered waterfall at Alum Hollow is a 3-mile round trip easy hike located on Green Mountain Nature Preserve. Around the corner from the falls is Alum Cave, a rock shelter used during the Middle Woodland period as well as another smaller waterfall.



Photo by North Alabama
Ambassador David Parham

17 Mardis Mill Falls

Blountsville, Alabama, GPS: N 34 02.405 W 86 34.171

www.BlountOneontaChamber.org

Located on Grave's Creek which feeds into The Black Warrior/Locust Fork River, the falls are roughly 35-feet wide and the water drops 16-feet. Also known as Graves Creek Falls.



Photo by North Alabama
Ambassador David Parham

18 Walls of Jericho

Jackson County, Alabama, GPS: 34.99004° N 86.10295° W
www.alabamaforeverwild.com

Walls of Jericho is a part of Alabama's Forever Wild Land Trust. This hike is 7-miles round trip and is rated difficult. The trail is lined with woods, springs, caves, bluffs and rivers. At the end is a beautiful swimming hole with a small waterfall. Continuing upstream is a cave with a river flowing from it as well as another larger waterfall.



Photo by North Alabama
Ambassador David Parham

19 Pisgah Gorge Falls

Pisgah, Alabama, GPS: N 34° 40.283 W 085° 51.535
www.mountainlakeschamberofcommerce.com

This gorge is located within Sand Mountain at Pisgah. At a total of 600 feet spread out over 1.5 miles, the gorge includes four waterfalls, two that are each close to 100 feet tall.



Photo by John Dersham

20 High Falls

Grove Oak, Alabama, GPS: N 34° 23.923 W 086° 3.975
www.visitlookoutmountain.com/high-falls-park

High Falls waterfall is considered a hidden treasure in Alabama. Located within High Falls County Park, High Falls waterfall is 55 feet high and close to 300 feet wide! In seasons of heavy rains, the entire width of the waterfall is overflowing. The park also features a natural bridge at the bottom of the waterfalls, along with a walking bridge that crosses over the waterfall.

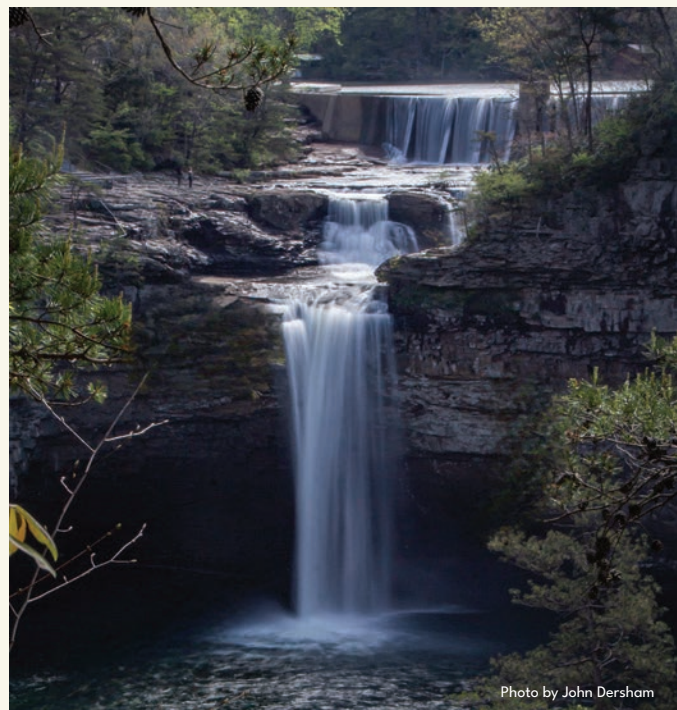


Photo by John Dersham

21 DeSoto Falls

Mentone, Alabama, GPS: N 34 32.920 W 85 35.433
www.alapark.com/AL-desoto-falls

One of the most photographed points of interest in Alabama, DeSoto Falls is also one of the tallest (107 ft.) and most visited waterfall locations in the state. It also features numerous smaller falls. The waterfall has a concrete dam above the falls, which was built in 1925 for Alabama's first hydroelectric power plant, which is of historical significance.



Photo by John Dersham

22 Little River Falls

Gaylesville, Alabama. GPS: N 34 23.612 W 85 37.574
(Border of Cherokee and DeKalb Counties, Ala.)

www.nps.gov/liri/planyourvisit/little-river-falls.htm

Known as one of America's deepest and most extensive canyon systems east of the Mississippi River, Little River Canyon National Preserve is 14,000 acres of nothing but beauty. Located at the north end of Little River Canyon National Preserve, Little River Falls is one of Alabama's most scenic waterfalls. Handicapped accessible.



Photo by John Dersham

23 Grace's High Falls

Fort Payne, Alabama, GPS: N 34 21.281 W 85 40.387

www.visitlookoutmountain.com/play/alabama-waterfalls

Located within the 14,000 acres of Little River Canyon National Preserve is Grace's High Falls. Though only seasonal, this waterfall is one of Alabama's highest waterfalls. At over 133 feet high, the waterfall features a view you can't find anywhere else. When rainfall is high, a significant amount of smaller creeks and waterfalls can be seen while exploring the area. The best time to view is in the winter. Handicapped accessible.

Explore North Alabama's Majestic Appalachian Mountains



Photo by North Alabama
Ambassador David Parham

24 Congo Falls

Cherokee County, Alabama, GPS: 34.2978° N 85.7027° W
www.congofallspark.com

Congo Falls is located inside the Congo Nature Preserve bordering Little River Canyon, located along Cherokee County Road 43. No hiking is required to see this waterfall. The park requires a permit on some days, make sure to check their website for a permit before visiting.

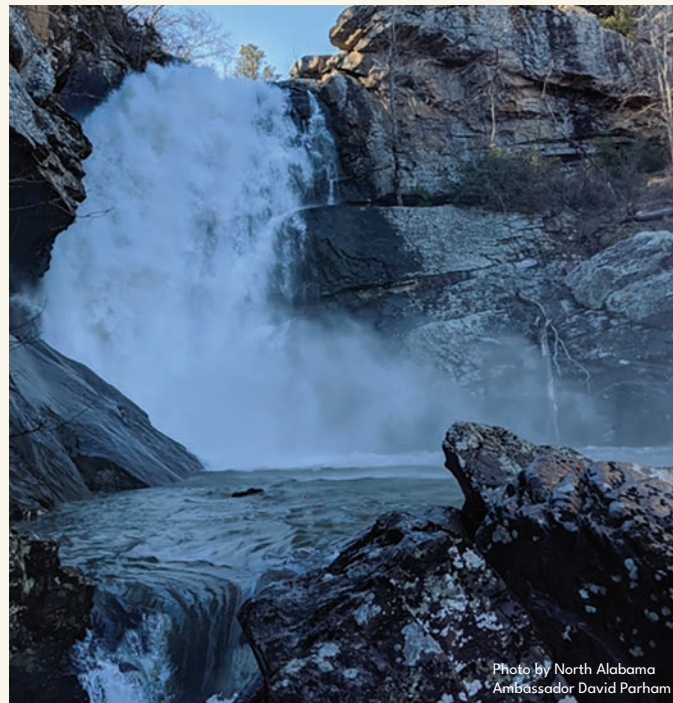


Photo by North Alabama
Ambassador David Parham

25 Yellow Creek Falls

Cherokee County, Alabama, GPS: 34.22774 -85.73161
alabamarecreationtrails.org

Yellow Creek Falls is located on Weiss Lake in Leesburg, AL. This waterfall requires a short trip across the lake, which is accessible by boat, canoe, or kayak and a short hike. Yellow Creek Falls is a 100 ft waterfall and is surrounded by beautiful rocky terrain.

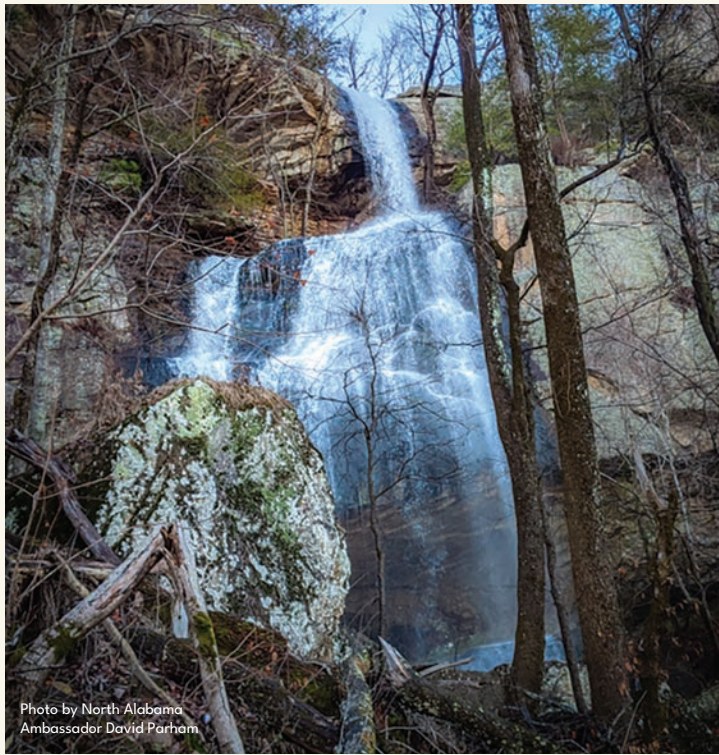


Photo by North Alabama
Ambassador David Parham

26 Griffin Falls

Collinsville, Alabama

GPS: 34.2870363 -85.9308049

Griffin Falls is located on a cliff near Collinsville, AL. This is a short, less than 1-mile hike and is rated difficult. Located here is a charming downhill stream with a giant rockface and beautiful tall waterfall. During the winter there are amazing views of the surrounding area.



Our waterfalls are close enough to each other that you can visit several in a day and experience them all in a long weekend. Check out our Mobile Passport for updates and locations. NorthAlabama.org/Trails

27 Noccalula Falls

Noccalula Falls Park, 1500 Noccalula Rd.

Gadsden, Alabama

GPS: 34.04149 -86.02128

www.noccalulafallspark.com

Named after a Creek Indian princess, Noccalula Falls stands 90 feet tall and is one of the most visited natural attractions in the state. When rain conditions are normal, the waterfall is around 20 feet with a smaller waterfall located a little to the right of the higher fall. While heavy rains cause the two falls to merge into one wider waterfall. Handicapped accessible.

